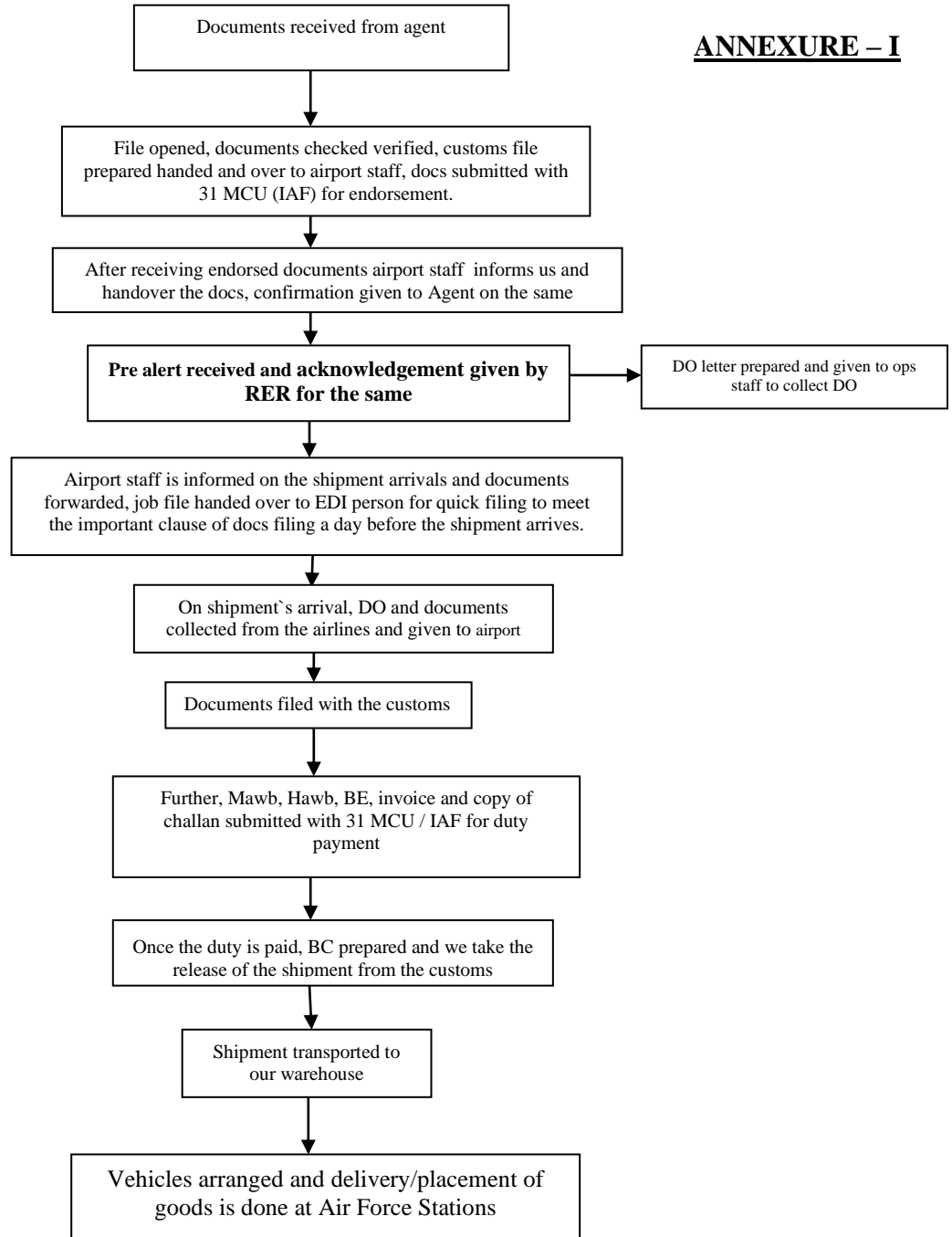


ANNEXURE – I



Note:- Weekly reports for both import and re-export is sent to agent, keeping all concerned in Loop.

VERY IMP:- The authorised person shall file the bill of entry before the end of the next day following the day (excluding holidays) on which the aircraft carrying the goods. In case, it is not filed within the specified time, we shall be liable to pay charges for late presentation of the bill of entry at the rate of rupees five thousand per day for the initial three days of default and at the rate of rupees ten thousand per day for each day of default thereafter.